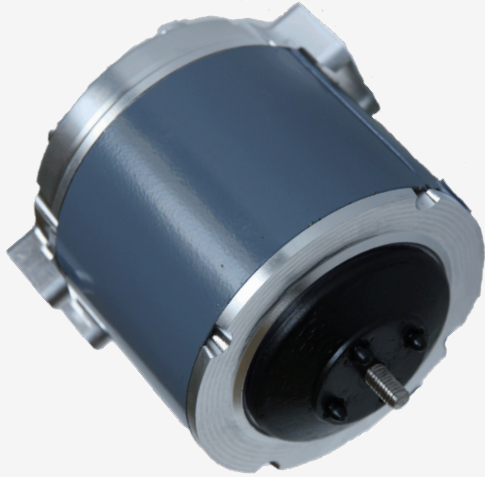




UNADA COMMUTATED  
EC MOTOR

Walk-In-Coolers | Evaporators  
Condensers | Ventilation

PRELIMINARY



DATASHEET  
UC40

## SPECIFICATION

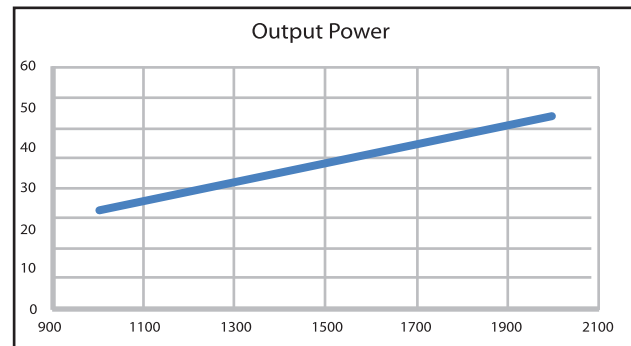
Rated voltage	100 - 240Vac (+/-10%), 50/60Hz
Temperature range	-30°C to +50°C
Thermal Derate Protection	Torque compensation in overload condition
Rated current	0.8/ 0.4A
Efficiency	≤ 75%
Output power	40W Nominal (1/20th hp@1550 rpm)
Rated speed	400 to 2000 rpm (+/-1%)
Speed selection	3 discrete programmable speeds.
Direction of rotation	CCW, CW, reversible
Reverse Speed	Timed reverse options available.
Motor Protection	Electronic Protected (EP)
Ground Protection	Earth wire optional
Insulation Class	Class B
Shaft Diameters	8mm
Bearing	608 sealed ball bearings
Approvals	UL / TÜV / CE / RCM
Ingress protection	IP66

## WIRING DIAGRAM



BLACK Control Wire  
BLUE Neutral  
BROWN Phase

## PERFORMANCE



## DIMENSION

